

Championnat de France de Grilles Logiques

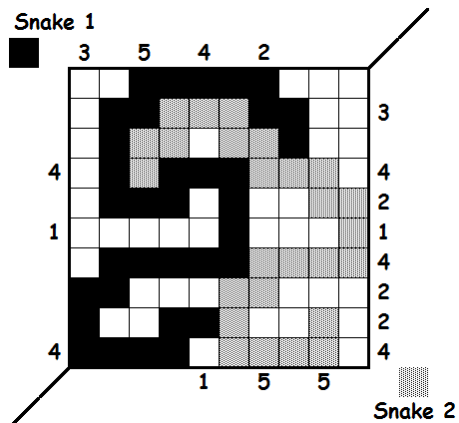
Samedi 10 juin 2017



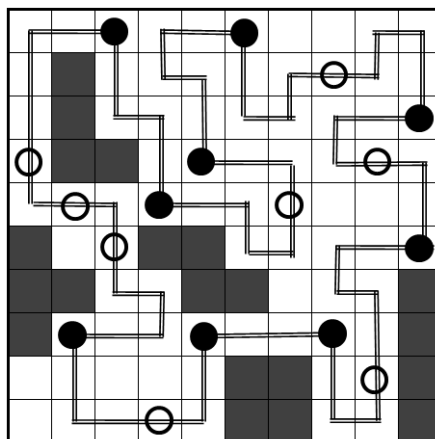
Fédération Française
des Jeux Mathématiques

SOLUTIONS : Epreuve n°3

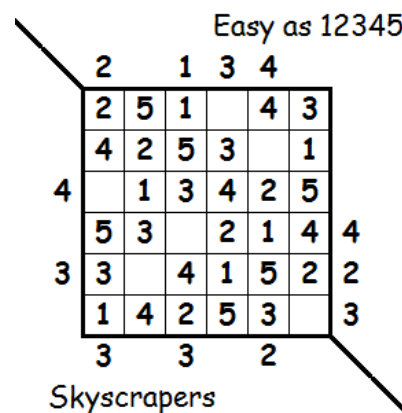
1. Double Snakes



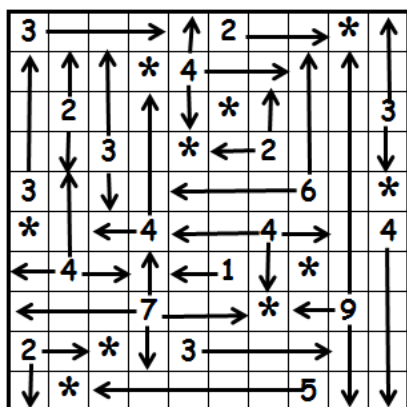
2. Masyu - Quadrimino



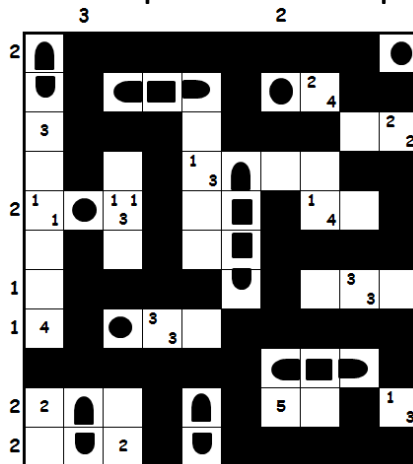
3. Easy as 1235-Skyscrapers



4. Four Wings - Stars



5. Tapa - Battleships



6. Kakuro - Sudoku

		18		11					31		
45	9	1	3	2	4	8	6	7	5		
	10	2	5	3	18	4	7	1	6		
6	2	4	32	12	1	8	3	14	5	9	
17	1	3	2	5	6	22	21	9	4	8	
24	7	8	9	17	2	6	5	3	1		
	12	20	14	6	8	9	12	9	3	23	2
22	5	9	8	16	20	3	7	4	6	7	
31	4	6	7	9	5	13	2	8	3		
8	3	5		7	1	2	8	9	4		

7. Japanese - Pentamino

